



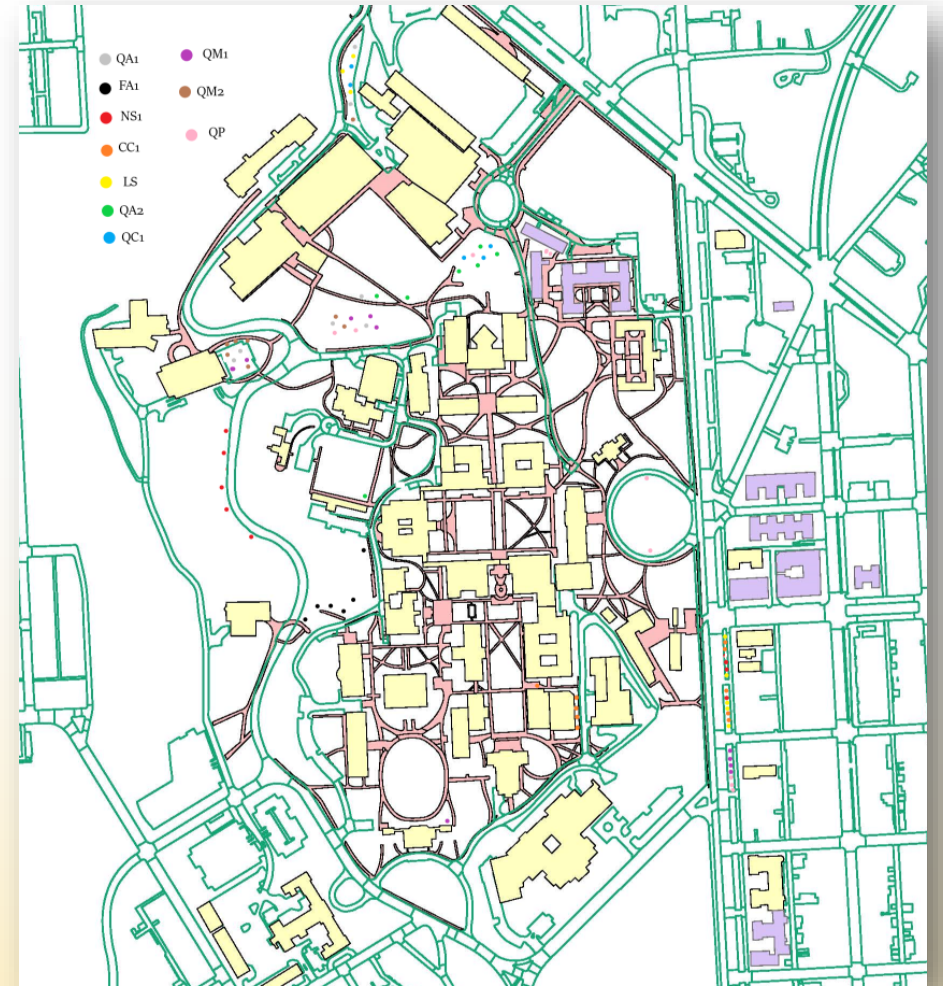
Good Things Come in Trees

Reimagining Tree Inventory Management for
Johns Hopkins Homewood Campus

Shelby Kline, JMT Technology Group

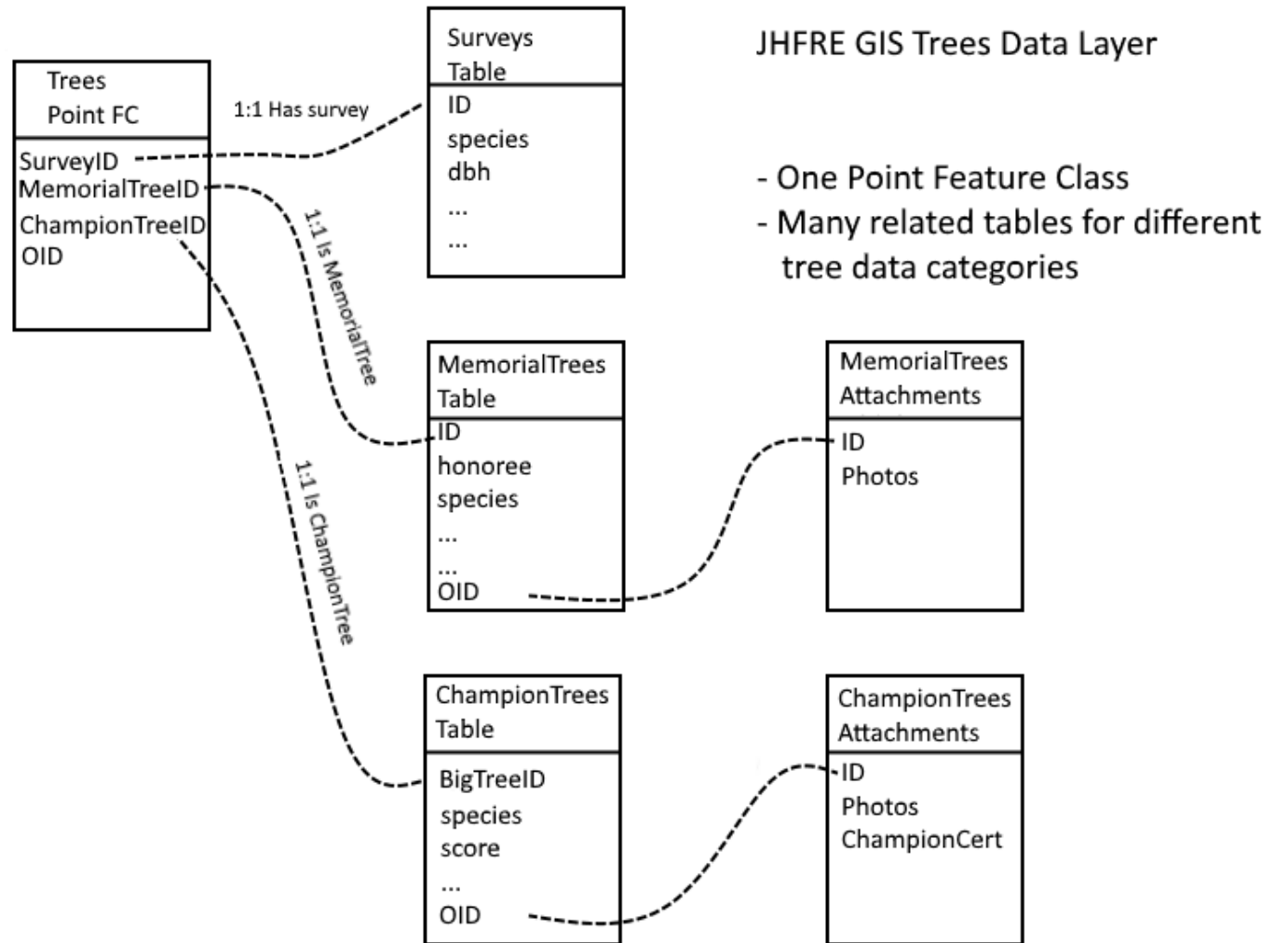
The Tree Inventory

- Trees
- Memorial Trees
- Champion Trees



The Root of the Problem

- Not friendly to new GIS users
 - Multiple related tables
- Redundant
- Desktop-based



Simple feature class						Geometry		Point
Trees						Contains M Values		No
						Contains Z Values		Yes
Field name	Data Type	Allow nulls	Default Value	Domain	Precision	Scale	Length	Details
OBJECTID	Object ID							
Asset_ID	Text	Yes					20	Automatically populated when the user adds a tree. Formatted as "TREE" followed by a 6 digit number.
Owner	Text	Yes		TreeOwner			50	
ScientificCommonName	Text	Yes		TreeScientificCommonName			255	Scientific and Common names of the tree.
Condition	Text	Yes		TreeCondition			50	Tree health or condition.
Comments	Text	Yes					255	Details on the location, appearance, and health of the tree.
DBHInches	Float	Yes			3	2		Diameter at breast height (DBH) of the tree in inches.
IsChampion	Text	No	No	Yes_No				Set to Yes if the feature represents a Champion tree.
IsMemorial	Text	No	No	Yes_No				Set to Yes if the feature represents a Memorial tree.
MemPersonRemembered	Text	Yes						Person memorialized.
MemPlaque	Text	Yes		Yes_No				Memorial tree plaque.
MemDonor	Text	Yes						Memorial tree donor.
MemDate	Date	Yes						Date memorialized.
BigTreeID	Text	Yes					12	Champion Tree ID. Formatted as "BT-" followed by a four digit number.
CaptureMethod	Text	Yes		dCaptureMethod			100	
SurveyDate	Date	Yes						Date of last survey.
Inventory_QC	Text	Yes	No	Yes_No				Whether or not the feature has been QC'd.
Inventory_QCDate	Date	Yes						Date of last QC performed on the feature.
Shape	Geometry	Yes						

Sprucing It Up

- 3 Definition Queries
 - One for each tree type
- Branch versioning
- Published editor version to Portal
- Groundskeeping Team edits in Web App

Definition Queries
+ New definition query
⚙

✔
Memorial Trees

IsMemorial = 'YES'

Edit

✔
Champion Trees

IsChampion = 'YES'

Edit

At-tree-bute Rules and Domains

Tree_ID

Calculation

Rule Name

Description

Subtype

Field

☒ Editable

Expression else //otherwise
return \$feature.Asset_ID //return the original value
****"/>

➤ Error

▼ Triggers

Insert ☒ Update ☒ Delete ☐

▼ Execution

☒ Exclude from application evaluation

☐ Batch

☐ Disable

Attributes Geometry Attachments (0)

OBJECTID	74070
Owner	JHU
TreelD	TREE102860
GlobalID	{174035F1-D9E7-4A4C-B56E-8353142EE5E0}
Scientific Common Name	Add New Species!

Con Add New Species!

Com Acer ginnala - Amur Maple

DBH Acer griseum - Paperbark Maple

Is Ch Acer palmatum 'atropurpureum' - Japanese Red Maple

Is Me Acer palmatum - Greenleaf Japanese Maple

Char Acer palmatum var. dissectum atropurpureum - Cutleaf Japanese Red Maple

Rem Acer platanoides - Norway Maple

Plaq Acer rubrum 'Red Sunset' - Red Sunset Maple

Mem Acer rubrum - Red Maple

Mem Acer saccharinum - Silver Maple

Plaq Acer saccharum - Sugar Maple

Mem Acer tataricum - Tatarian Maple

Mem Acer triflorum - Three Flower Maple


Mem Aesculus hippocastanum - Horsechestnut


Mem Aesculus x carnea - Red Horsechestnut


✓ Av Ailanthus altissima - Tree of Heaven

Cat Amelanchier laevis - Allegheny Serviceberry

Select a tree type to create features


Trees


Memorial Trees


Champion Trees

New selection



Trees

Tree ID (Auto-populated by GIS System)

Owner

Scientific & Common Name

Condition

Comments

DBH Inches

Survey Date

Attachments:

Choose File

No file chosen

Edited seconds ago

☐ Edit Geometry

Cancel

Save





Trees

Tree ID (Auto-populated by GIS System)

Owner

JHU

Scientific & Common Name

Quercus acutissima - Sawtooth Oak

Condition

Excellent

Comments

TUgis presentation example

DBH Inches

2

Survey Date

7/28/2022

Attachments:

Choose File

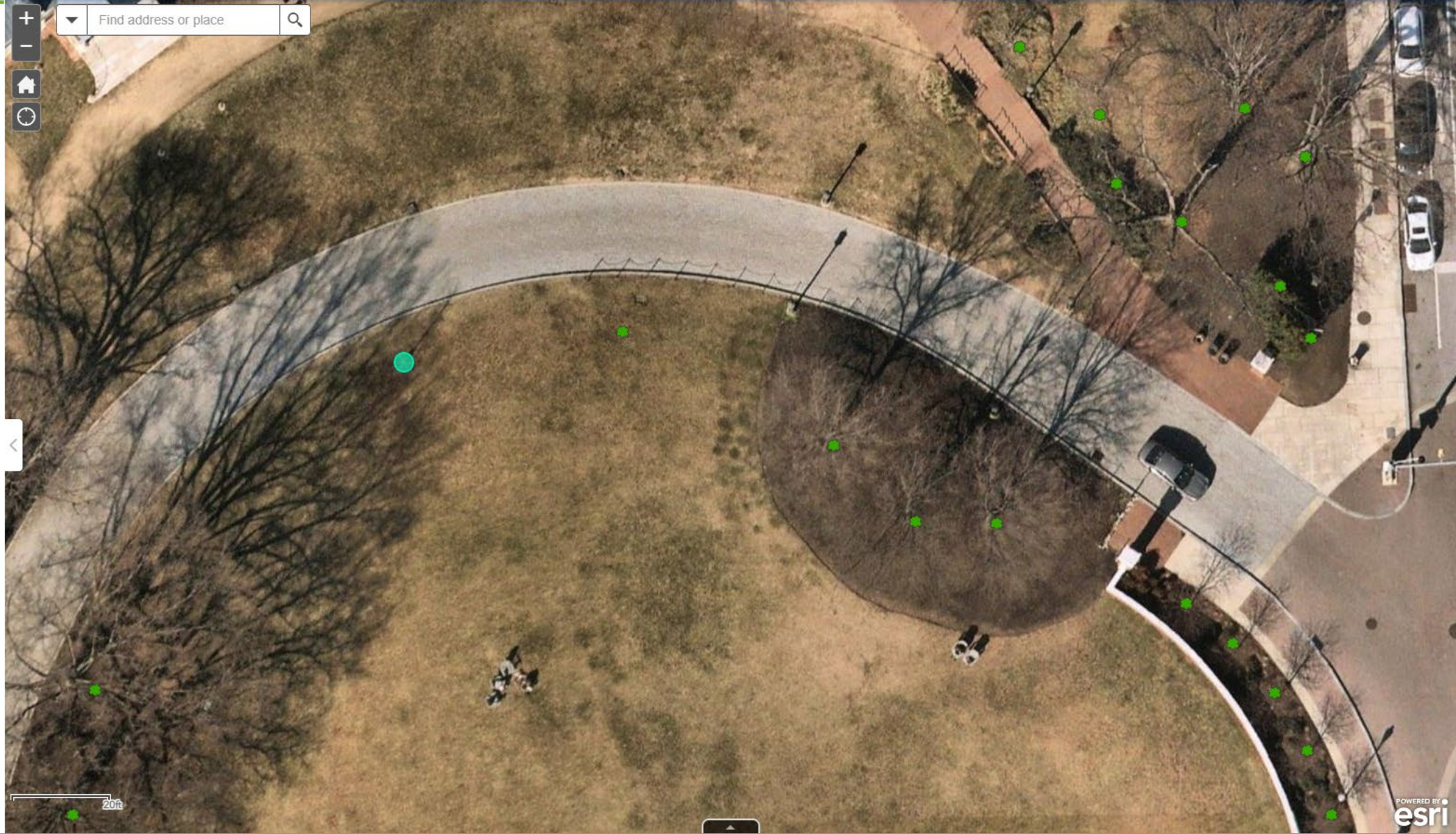
 No file chosen

Edited seconds ago


☐ Edit Geometry


Cancel


Save







Select a tree type to create features


Trees



Memorial Trees


Champion Trees


New selection



Find address or place



20ft



TREE102863

Tree ID (Auto-populated by GIS System)

TREE102863

Owner

JHU

Scientific & Common Name

Quercus acutissima - Sawtooth Oak

Condition

Excellent

Comments

TUgis tree example

DBH Inches

2.00

Capture Method

Survey Date

7/28/2022

Created User

skline20

Created Date

7/28/2022, 12:21 PM


Last Edited User


skline20

Last Edited Date

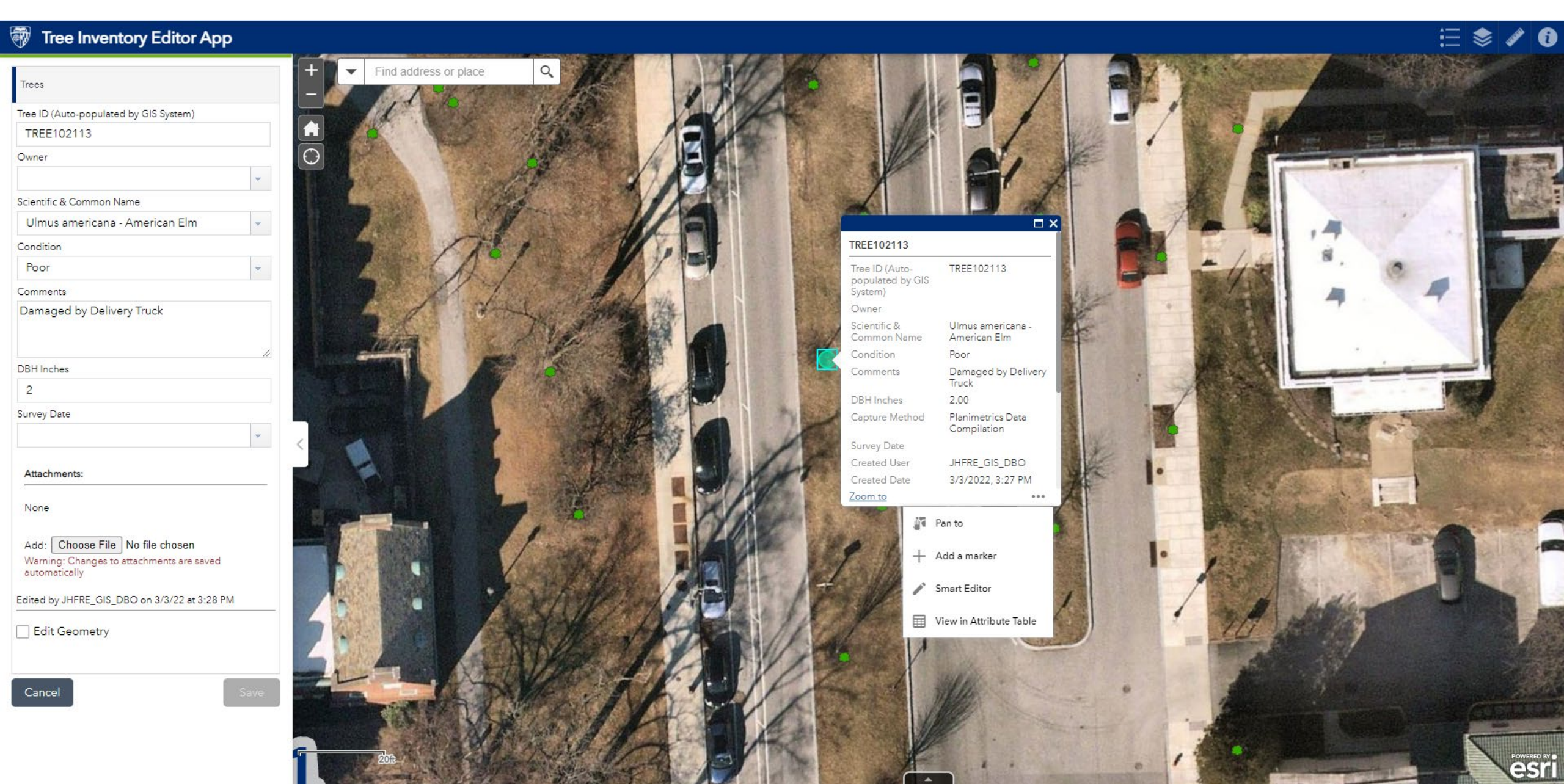
7/28/2022, 12:21 PM

Zoom to



 TECHNOLOGY GROUP

POWERED BY
esri



Pitfalls

Attributes		Geometry	Attachments (0)
OBJECTID	74070		
Owner	JHU		
TreelD	TREE102860		
GlobalID	{174035F1-D9E7-4A4C-B56E-8353142EE5E0}		
Scientific Common Name	Add New Species!		
Condition	<Null>		
Comments	Quercus montana - chesnut oak		
DBH Inches	1		

Extensive confusion between the chestnut oak (*Quercus montana*) and the swamp chestnut oak (*Quercus michauxii*) has occurred, and some botanists have considered them to be the same species in the past.

The name ***Quercus prinus*** was long used by many botanists and foresters for either the chestnut oak or the swamp chestnut oak, with the former otherwise called *Q. montana* or the latter otherwise called *Q. michauxii*. The application of the name *Q. montana* to the chestnut oak is now accepted, since *Q. prinus* is of uncertain position, unassignable to either species.^{[7][8][9][10]}

Sources: *Flora of North America*, Wikipedia



Questions?

Thank you!

Shelby Kline
JMT Technology Group
skline2@jmt.com

